

WHAT ARE MEDICAL MARIJUANA DISPENSARIES?



Marijuana dispensaries, better known as “pot shops”, are outlets that sell, administer, dispense, distribute, cultivate, and possess marijuana and related supplies under the guise of dispensing medicine. Pot shops have been operating in California since the passage of Prop 215, a proposition that legalized marijuana as a so-called medicine. To date there are over 600 marijuana dispensaries operating in Los Angeles alone. There are some neighborhoods in Los Angeles where the number of “medical” marijuana dispensaries outnumbers the amount of Starbucks and McDonalds.



Within the last two years, 117 cities and 7 counties in California have banned pot shops. This number speaks volumes about what happens when communities see through the smoke-screen and are enlightened as to what dispensaries really bring their communities - more illegal drug use, more crimes, and more of our youth being sold marijuana from a so-called medical marijuana patient.



5999 Central Avenue, Suite 301
St. Petersburg, FL 33710

Phone: 727-828-0210 Fax: 727-828-0212

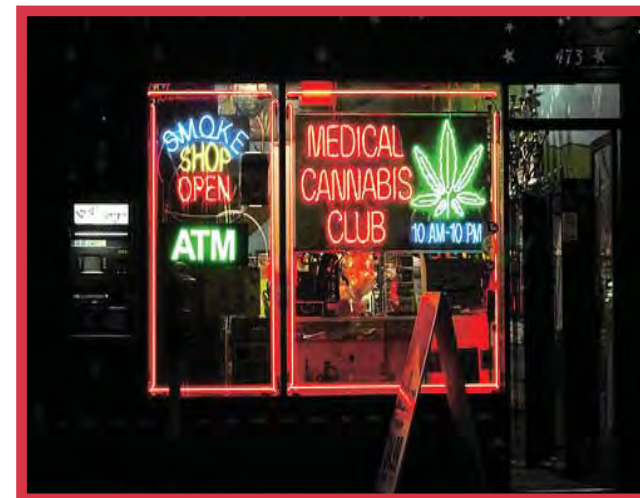
www.saveoursociety.org

Save Our Society From Drugs is a 501(c)(4) non-profit organization. Your donation will further help us promote sound drug policies that protect our children and help us push back against drug legalization efforts.

A COPY OF THE OFFICIAL REGISTRATION AND FINANCIAL INFORMATION MAY BE OBTAINED FROM THE DIVISION OF CONSUMER SERVICES BY CALLING TOLL-FREE (800-435-7352) WITHIN THE STATE.

REGISTRATION DOES NOT IMPLY ENDORSEMENT, APPROVAL, OR RECOMMENDATION BY THE STATE, REGISTRATION# CH2913 EXPIRATION DATE: AUGUST 22, 2010

COMING SOON TO A NEIGHBORHOOD NEAR YOU!



MEDICAL MARIJUANA DISPENSARIES (pot shops) AND GROW HOUSES



WHAT IS WRONG WITH DISPENSARIES?



Dispensaries are in business to make money and will sell marijuana to anyone who produces a written recommendation. These recommendations can be obtained by paying physicians a fee and claiming any medical condition, even a headache. Dispensaries claim to operate as nonprofit, but they have been tied to organized crime gangs and are often multi-million dollar profit centers.



Dispensaries are easy marks for criminal activities because of valuable marijuana crops and large amounts of cash. Operators of dispensaries have been attacked and murdered by armed criminals both at their storefronts and at home. Common secondary byproducts related to dispensaries include: drug dealing, sales to minors, loitering, heavy vehicle and foot traffic in retail areas, increased noise, and robberies of customers just outside the facilities.

WHAT IS A GROW HOUSE?

A grow house is a property, usually located in a suburban residential neighborhood, that is primarily used for the production of marijuana.



A typical indoor grow site can house hundreds of full grown marijuana plants.



Marijuana grow operations are criminal enterprises and frequently have links to organized crime. They are often the targets of home invasion robberies, and it is not uncommon to find weapons and other illegal drugs on site.

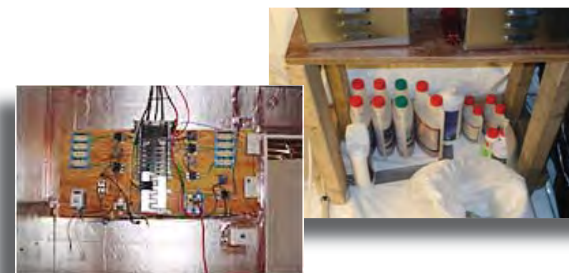


WHAT IS WRONG WITH A GROW HOUSE?

Marijuana growers have begun moving their operations indoors in response to an increase in attention by law enforcement organizations directed towards outdoor cultivation.



A marijuana grow house presents a danger to neighboring homes because of the toxic materials and high volume of electricity used to grow marijuana. Overloaded electrical systems, improper wiring and the extreme heat generated by high intensity light bulbs increase the potential for fire that could spread to neighboring homes.



Chemicals used in the grow operations may be discharged or dumped into the surrounding soil, causing unknown contamination.